

**CLONESKILLS, INC.**

Prepare To Lead.  
Lead With Skills.

---

**SAP QA (SAP Solutions Testing and SAP Business Process Reengineering) Training**

---



Prepare to lead.  
Lead with skills.

**CLONESKILLS**

The Global Training Company for Cultivating IT Leadership

---

**CLONESKILLS, Inc.**

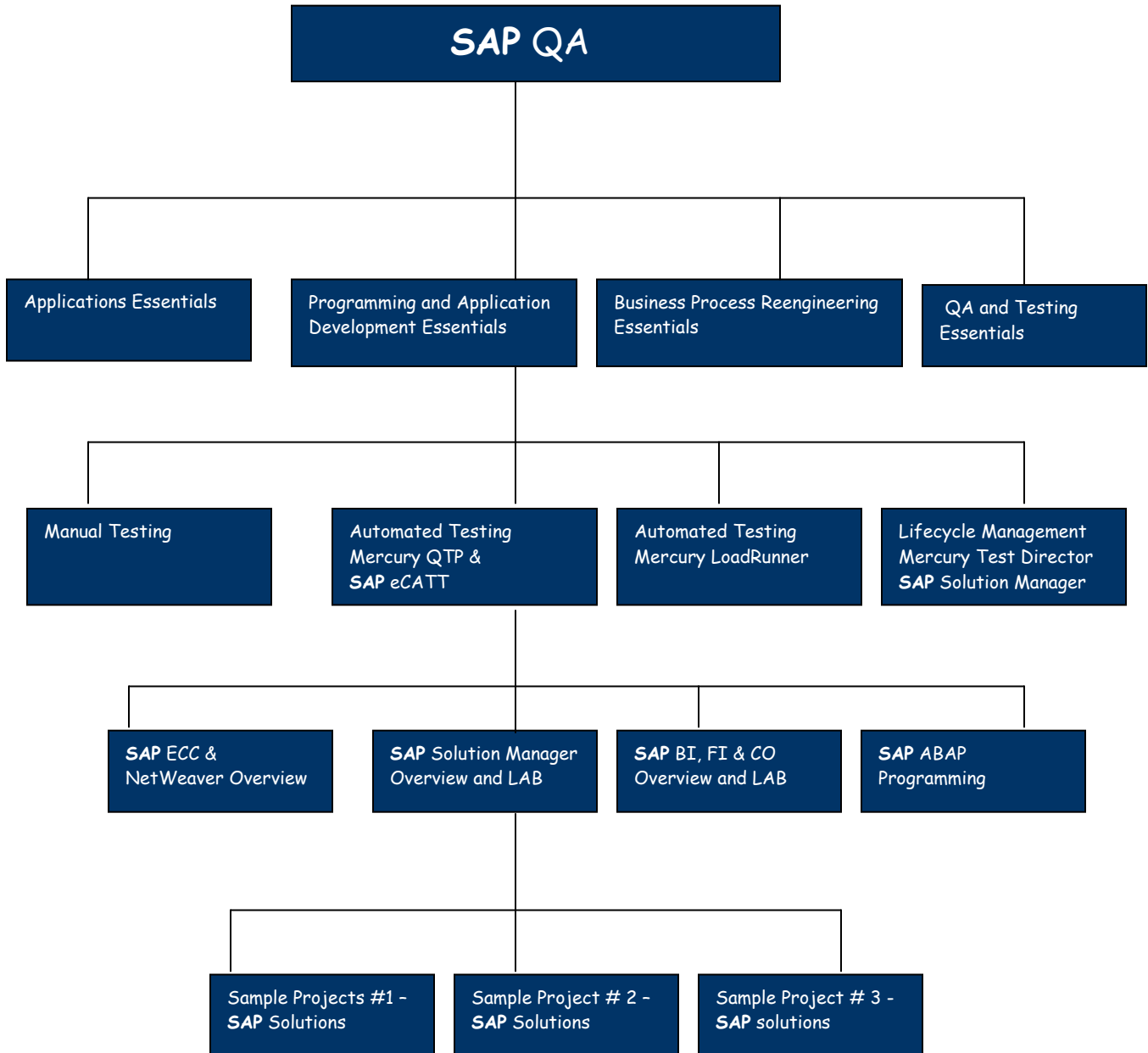
5348 Vegas Drive, Suite 733

Las Vegas, Nevada, 89108

Main : 1.800.836.5696

Email: [info@cloneskills.com](mailto:info@cloneskills.com)

## TRAINING ROAD MAP



---

**SAP QA (SAP Solutions Testing and SAP Business Process Reengineering) Training**

---

**SAP QA (SAP SOLUTIONS TESTING AND SAP BUSINESS PROCESS REENGINEERING) TRAINING**

<b>COURSE CONTENT AND SYLLABUS – TECHNICAL TRAINING</b>			
#	COURSE CONTENT	SESSION #	SESSION DURATION
1	Fundamentals and Overview (Solutions , Quality Assurance and Business Processes)	1	4
	<b>Quiz # 1</b>		
2	Process Improvements Fundamentals and Overview	1	4
	<b>Quiz # 2</b>		
3	Software and Applications Testing Fundamentals and Overview	2	8
	<b>Quiz # 2</b>		
4	Applications and Programming Languages Fundamentals and Overview	3	8
	<b>Quiz # 4</b>		
5	Test Director	4 & 5	16
	<b>Quiz # 5</b>		
6	QuickTest Professional	6 & 7	16
	<b>Quiz # 6</b>		
7	LoadRunner	8& 9	16
	<b>Quiz # 7</b>		
8	Sample Project and Interview Preparation	8	8
TOTAL SESSIONS AND HOURS		9	72 HOURS
<b>COURSE CONTENT AND SYLLABUS – Hands-On EMPLOYMENT TRAINING</b> (Applicable only for Qualified Participants)			
	SAP ECC and NetWeaver Overview and LAB	10	8
	<b>Quiz # 8</b>		
	SAP Solutions Manager Overview and LAB	11	8
	<b>Quiz # 9</b>		
	SAP Business Intelligence (BI) Overview and LAB	12	8
	<b>Quiz # 10</b>		
	SAP Finance (FI) & Controlling (CO) Overview and LAB	13	8
	<b>Quiz # 11</b>		
	Sample Project - # 1 (Applying Six Sigma DMAIC in SAP Business Process Redesign)		
	Sample Project - # 2 (Using Test Director and QTP in SAP Solutions)		
	Sample Project - # 3 (Using Test Director and Load Runner in SAP Solutions)		
TOTAL SESSIONS AND HOURS		3	32 HOURS

---

**SAP QA (SAP Solutions Testing and SAP Business Process Reengineering) Training**

---

<p><b>SAP QA (SAP SOLUTIONS TESTING AND SAP BUSINESS PROCESS REENGINEERING) TRAINING</b></p>		
#	AREA OF FOCUS	TOPICS
1	<p><b>QUALITY &amp; BUSINESS PROCESS MANAGEMENT FUNDAMENTALS AND OVERVIEW FOR SAP SOLUTIONS</b></p>	<ul style="list-style-type: none"> <li>▪ Project Management Overview (PMBOK)</li> <li>▪ Quality Assurance</li> <li>▪ Quality Policy</li> <li>▪ Quality Control</li> <li>▪ Quality VS Process Improvement</li> <li>▪ Six Sigma - DMAIC (Green Belt Level)</li> <li>▪ Change Management</li> <li>▪ Configuration Management</li> </ul>
2	<p><b>APPLICATIONS AND PROGRAMMING LANGUAGES FUNDAMENTALS &amp; OVERVIEW</b></p>	<ul style="list-style-type: none"> <li>▪ J2EE Application</li> <li>▪ Web Server</li> <li>▪ Application Servers</li> <li>▪ Database Server</li> <li>▪ Session Management Fundamentals</li> <li>▪ Transaction Management</li> <li>▪ Security Management</li> <li>▪ RDBMS Fundamentals</li> <li>▪ Oracle SQL * PLUS</li> <li>▪ Oracle PL/SQL</li> <li>▪ Software Development Lifecycle (SDLC)</li> <li>▪ Application Environment Management</li> <li>▪ Application Problem Management</li> <li>▪ Application Build and Release Management</li> <li>▪ Custom Applications Vs Enterprise Applications</li> <li>▪ SAP ABAP</li> <li>▪ <b>Active PERL</b></li> </ul>
3	<p><b>SAP SOLUTIONS TESTING FUNDAMENTALS &amp; OVERVIEW</b></p>	<ul style="list-style-type: none"> <li>▪ Software Testing</li> <li>▪ Applications Testing</li> <li>▪ Manual Testing</li> <li>▪ Automated Testing</li> <li>▪ Functional Testing</li> <li>▪ System Testing</li> <li>▪ Load Testing</li> <li>▪ Volume Testing</li> <li>▪ Stress Testing</li> <li>▪ Regression Testing</li> <li>▪ White Box Testing</li> <li>▪ Black Box Testing</li> <li>▪ Performance Testing</li> <li>▪ Testing Role in Hardware Sizing and Capacity Planning</li> </ul>
4	<p><b>MERCURY TEST DIRECTOR (OR QUALITY CENTER) AND SAP SOLUTIONS MANAGER</b></p>	<p><b><u>Introducing Quality Center</u></b></p> <ul style="list-style-type: none"> <li>▪ The Quality Center Testing Process</li> </ul>

---

**SAP QA (SAP Solutions Testing and SAP Business Process Reengineering) Training**

---

		<ul style="list-style-type: none"> <li>▪ Starting Quality Center</li> <li>▪ The Quality Center Window</li> <li>▪ Business Case Study – Demo</li> <li><b><u>Specifying Testing Requirements</u></b> <ul style="list-style-type: none"> <li>▪ Defining Requirements</li> <li>▪ Viewing Requirements</li> <li>▪ Modifying Requirements</li> <li>▪ Converting Requirements</li> </ul> </li> <li><b><u>Planning Tests</u></b> <ul style="list-style-type: none"> <li>▪ Developing Test Plan Tree</li> <li>▪ Designing Test Steps</li> <li>▪ Calling Tests with Parameters</li> <li>▪ Creating and Viewing Requirements Coverage</li> <li>▪ Generating Automated Test Scripts</li> </ul> </li> <li><b><u>Running Tests</u></b> <ul style="list-style-type: none"> <li>▪ Defining Test Sets</li> <li>▪ Adding Tests to a Test Set</li> <li>▪ Scheduling Test Runs</li> <li>▪ Running Tests Manually</li> <li>▪ Running Test Automatically</li> </ul> </li> <li><b><u>Adding and Tracking Defects</u></b> <ul style="list-style-type: none"> <li>▪ How to Track Defects</li> <li>▪ Adding New Defects</li> <li>▪ Matching Defects</li> <li>▪ Updating Defects</li> <li>▪ Mailing Defects</li> <li>▪ Associating Defects with Tests</li> <li>▪ Creating Favorite Views</li> </ul> </li> <li><b><u>Tracing Changes</u></b> <ul style="list-style-type: none"> <li>▪ Triggering a Traceability Alert</li> <li>▪ Viewing the Traceability</li> <li>▪ Creating Follow up Alerts</li> </ul> </li> <li><b><u>Analyzing the Test Process</u></b> <ul style="list-style-type: none"> <li>▪ Generating Reports</li> <li>▪ Generating Alerts</li> </ul> </li> </ul>
5	<p><b>MERCURY QUICKTEST PROFESSIONAL (QTP) AND SAP eCATT</b></p>	<ul style="list-style-type: none"> <li><b><u>Introducing Quick Test</u></b> <ul style="list-style-type: none"> <li>▪ Benefit of Automated Testing</li> <li>▪ Testing Process</li> <li>▪ QuickTest Window</li> <li>▪ Mercury Tours Sample Web Site</li> <li>▪ Optimizing Browser Setting for Your Testing</li> <li>▪ Using the Mercury Tours Web Site for the First Time</li> </ul> </li> <li><b><u>Recording Tests</u></b> <ul style="list-style-type: none"> <li>▪ Preparing To Record a Test</li> <li>▪ Recording a Test</li> <li>▪ Analyzing The Test in the Keyword View</li> </ul> </li> <li><b><u>Running and Analyzing Tests</u></b> <ul style="list-style-type: none"> <li>▪ Running a Test</li> <li>▪ Analyzing a Test</li> </ul> </li> </ul>

---

**SAP QA (SAP Solutions Testing and SAP Business Process Reengineering) Training**

---

		<p><b><u>Creating Checkpoints</u></b></p> <ul style="list-style-type: none"> <li>▪ Understanding Checkpoint Types</li> <li>▪ Checking Objects</li> <li>▪ Checking Pages</li> <li>▪ Checking Text</li> <li>▪ Checking Tables</li> <li>▪ Running and Analyzing a Test with Checkpoints</li> </ul> <p><b><u>Parameterize Tests</u></b></p> <ul style="list-style-type: none"> <li>▪ Defining a Data Table Parameter</li> <li>▪ Adding Parameter Values to a Data Tables</li> <li>▪ Modifying Steps Affected by Parameterization</li> <li>▪ Running and Analyzing a Parameter Test</li> <li>▪ Creating Output Values</li> </ul> <p><b><u>Creating an Output Values</u></b></p> <ul style="list-style-type: none"> <li>▪ Running and Analyzing a Test with Output Values</li> </ul> <p><b><u>Using Regular Expression</u></b></p> <ul style="list-style-type: none"> <li>▪ Working with Regular Expression</li> <li>▪ Running and Analyzing a Test with Regular Expression</li> </ul> <p><b><u>Dividing Tests into Multiple Actions</u></b></p> <ul style="list-style-type: none"> <li>▪ Working with Multiple Actions</li> <li>▪ Creating New Actions</li> <li>▪ Recording the Test</li> <li>▪ Dividing the Test into Two Actions</li> <li>▪ Inserting a Call to a New Action</li> <li>▪ Setting Actions as Reusable Actions</li> <li>▪ Inserting Existing Actions</li> <li>▪ Inserting Calls to action</li> <li>▪ Inserting a Copy of an Action</li> <li>▪ Parameterize an Action</li> <li>▪ Running and Analyzing a Multi -Action Test</li> </ul>
6	<p><b>MERCURY LOADRUNNER</b></p>	<p><b><u>Introducing LoadRunner</u></b></p> <ul style="list-style-type: none"> <li>▪ Why should you Automate Performance Testing</li> <li>▪ What are the LoadRunner Components</li> <li>▪ Understanding LoadRunner Terminology</li> <li>▪ What is the Load Testing Process</li> <li>▪ Getting Familiar with Mercury Tours</li> <li>▪ Application Requirements</li> </ul> <p><b><u>The Power of LoadRunner</u></b></p> <ul style="list-style-type: none"> <li>▪ Creating the Load Test</li> <li>▪ Running the Load Test</li> <li>▪ Monitoring the Load Test</li> <li>▪ Analyzing Results</li> </ul> <p><b><u>Building Scripts</u></b></p> <ul style="list-style-type: none"> <li>▪ Introducing the Virtual User Generation (VuGen)</li> <li>▪ How do I start recording user activities?</li> </ul>

---

**SAP QA (SAP Solutions Testing and SAP Business Process Reengineering) Training**

---

		<ul style="list-style-type: none"><li>▪ Using VuGen Wizard Mode?</li><li>▪ How do I record business process to create scripts?</li><li>▪ How to view the script?</li><li>▪ <b><u>Playing Back Your Scripts</u></b><ul style="list-style-type: none"><li>▪ How do I set the Run-time Behavior?</li><li>▪ How do I watch my script running in Real Time?</li><li>▪ When can I view the information about the replay?</li><li>▪ How do I know if my Test Passed?</li><li>▪ How do I search in or Filter results?</li></ul></li><li>▪ <b><u>Solving Common Playback Problems</u></b><ul style="list-style-type: none"><li>▪ Preparing Mercury Tours For Playback Errors</li><li>▪ How do I work with unique server values?</li></ul></li><li>▪ <b><u>Preparing a Script for Load Testing</u></b><ul style="list-style-type: none"><li>▪ How do I measure business process?</li><li>▪ How do I emulate Multiple Users?</li><li>▪ How do I verify webpage content?</li><li>▪ How can I Producing debugging Information?</li><li>▪ Did my Test Successes?</li></ul></li><li>▪ <b><u>Creating a Load Testing Scenario</u></b><ul style="list-style-type: none"><li>▪ Introducing the LoadRunner Controller</li><li>▪ What mixture of users should be part of the load Test?</li><li>▪ The Controller window at a Glance?</li><li>▪ How do I generate heavy load?</li><li>▪ How do I emulate real load behavior?</li><li>▪ How do I emulate different types of users?</li><li>▪ How do I monitor System under load?</li></ul></li><li>▪ <b><u>Running the Load Test</u></b><ul style="list-style-type: none"><li>▪ The Controller view at a Glance</li><li>▪ How do I run a load test scenario?</li><li>▪ How do I monitor the application under load?</li><li>▪ How do I watch a user running in real time?</li><li>▪ Where can I view a summary user Actions?</li><li>▪ How can I increase the load during the test?</li><li>▪ How the Application is coping under load?</li><li>▪ Did the Application Encounters Errors?</li><li>▪ How do I know that has finished running?</li><li>▪ Did the Application Perform well under load?</li><li>▪ Which Goal type should I use?</li><li>▪ How do I create a Goal Oriented Scenario?</li><li>▪ The Controller Window at a Glance</li><li>▪ How do I define the Goal?</li><li>▪ How do I determine load behavior?</li><li>▪ Which online Graphs should I monitor?</li></ul></li></ul>
--	--	--

---

**SAP QA (SAP Solutions Testing and SAP Business Process Reengineering) Training**

---

		<ul style="list-style-type: none"><li>▪ How do I run a Goal oriented scenario?</li><li>▪ Did I achieve my Goal?</li><li>▪ Analyzing Your Scenario</li></ul>
7	<p><b>SAP SOLUTIONS AND SAMPLE PROJECTS</b></p> <p>(Contact us for further details for this section )</p>	<ul style="list-style-type: none"><li>▪ <b>SAP</b> Solutions Manager</li><li>▪ <b>SAP</b> Financial &amp; Controlling Solutions</li><li>▪ <b>SAP</b> Business Intelligence Solutions</li><li>▪ <b>SAP</b> Strategic Enterprise Management Solutions</li><li>▪ <b>SAP</b> ABAP</li></ul>

---

**Disclaimer:**

CloneSkills is an independent training and solutions company, we provide Mercury and SAP learning solutions, we are not affiliated to Mercury or SAP. At CloneSkills we exclusively promote the SAP and Mercury Solutions, and do not compete with either SAP or Mercury.