

CLONESKILL, INC.

PREPARE TO LEAD.
LEAD WITH SKILLS.

SAP Netweaver 04s EP Technology Consultant Certification Preparation Training



Prepare to lead.
Lead with skills.

CLONESKILLS

The Global Training Company for Cultivating IT Leadership

CLONESKILLS, Inc.

5348 Vegas Drive, Suite 733

Las Vegas, Nevada, 89108

Main : 1.800.836.5696

Email: info@cloneskills.com

W
E

B
U
I
L
D

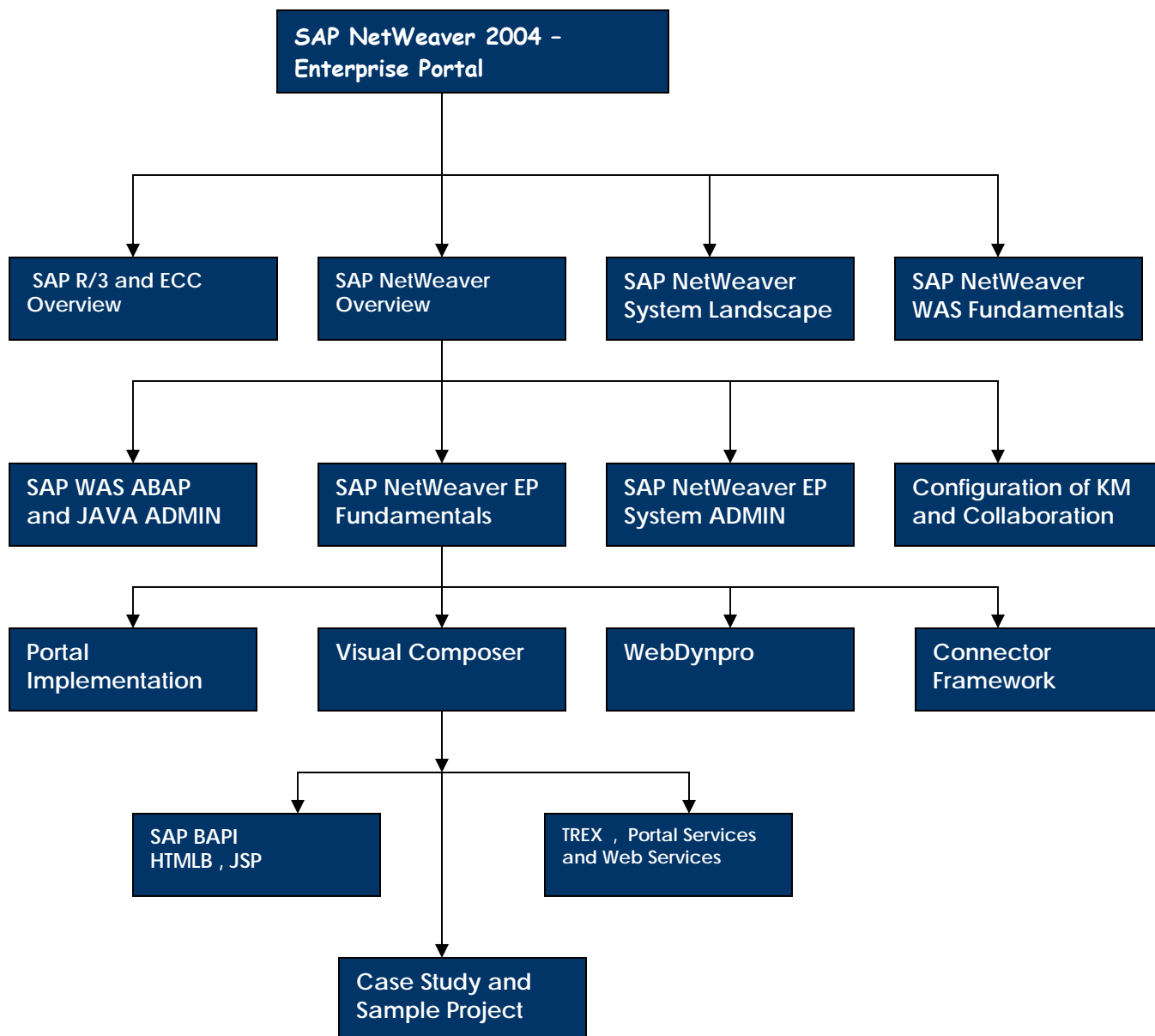
C
A
R
E
E
R

1

We differentiate our training from others by delivering Role-Based SAP instruction rather than SAP product focused training.

<http://www.CloneSkills.com> , JothiP@CloneSkills.com , (916)-296-0228
THE Global Training Company for Cultivating IT Leadership

Training Roadmap



TRAINING GOALS & OBJECTIVES

- SAP NetWeaver Portal Fundamentals
- SAP Enterprise Portal System Administration
- Configuration of Knowledge Management and Collaboration
- SAP Enterprise Portal and KMC Developmental

COURSE GOALS

This course will prepare you to

- Describe the SAP NetWeaver Portal
- Name the core functions of the SAP NetWeaver Portal
- Explain and use the most important features of the SAP NetWeaver Portal
- Assess the need for an enterprise portal
- Understand and configure the SAP Enterprise Portal User Management
- Use delegated user administration
- Use CCMS to analyze the SAP Enterprise Portal performance
- Use Single Sign-On with SAP and non-SAP system
- Understand backup and restore technology for the SAP Enterprise Portal
- Use Role Migration tools for SAP Enterprise Portal Roles and SAP System Components Roles
- Understand the different SAP tools and approaches of content development for the SAP NetWeaver Portal
- Setup and use the SAP NetWeaver Visual Composer
- Setup and use the SAP NetWeaver Development Studio
- Understand the provided Portal API and services
- Configure and Integrate SAP NetWeaver Knowledge Management and SAP NetWeaver Collaboration into SAP Enterprise Portal
- Understand and implement the functionality of Content Management, Collaboration, and Search and Classification (TREX)

COURSE OBJECTIVES

After completing the course, you will be able to

- Access the need for an enterprise portal
- Log on, navigate in and personalize the portal
- Describe the components that constitute the SAP NetWeaver Portal
- Explain and use the most important functions
- Configure user administration and logon
- Implement a portal authorization concept
- Describe variants for Single Sign-on
- Connect the SAP Enterprise Portal to an SAP system
- Securely operate and monitor an SAP Enterprise Portal
- Customize the portal interface to company requirements
- Perform system administration tasks for SAP NetWeaver Knowledge Management
- Configure and Implement Content Management
- Implement and configure Collaboration functions
- Implement Search and Classification (TREX)

SAP Netweaver 04s EP Technology Consultant Certification Preparation Training

SAP NetWeaver 2004 – Enterprise Portal Training Content and Syllabus		
Session #	Session Topics	Session Details
1	SAP Fundamentals	<ul style="list-style-type: none"> ▪ SAP Fundamentals and Navigation ▪ SAP NetWeaver Overview ▪ SAP ECC and my SAP Business Suits Overview ▪ Systems Landscape ▪ Application Architecture ▪ SAP Backend Technologies ▪ LAB
QUIZ # 0		
2	SAP Web AS Fundamentals	<ul style="list-style-type: none"> ▪ SAP Solution Offering ▪ Navigation ▪ SAP System Architecture ▪ Enterprise Services Architecture ▪ SAP NetWeaver, Overview ▪ LAB
QUIZ # 1		
3	SAP Web AS ABAP Administration	<ul style="list-style-type: none"> ▪ Starting and Stopping SAP systems ▪ Configuring SAP Web AS ABAP ▪ User Management in SAP Web AS ABAP ▪ Configuring Remote Connections ▪ Patching SAP Web AS ABAP ▪ Scheduling Background Jobs ▪ Monitoring SAP Systems ▪ Technology Components for Browser-based User Interfaces ▪ LAB
QUIZ # 2		
4	SAP Web AS Java Administration	<ul style="list-style-type: none"> ▪ Java Basics (non-programming topics) ▪ Starting and Stopping SAP Web AS Java ▪ Configuring SAP Web AS Java ▪ User Management in SAP Web AS Java ▪ Patching SAP Web AS Java ▪ Software Logistics for SAP Web AS Java ▪ Monitoring SAP Web AS Java ▪ LAB
QUIZ # 3		
5	SAP NetWeaver Portal Fundamentals	<ul style="list-style-type: none"> ▪ The Big Picture ▪ The End-User's Perspective ▪ Technical Infrastructure

We differentiate our training from others by delivering Role-Based SAP instruction rather than SAP product focused training.

SAP Netweaver 04s EP Technology Consultant Certification Preparation Training

		<ul style="list-style-type: none"> ▪ Portal Platform Content ▪ Security Aspects ▪ LAB
QUIZ # 4		
6	SAP NetWeaver Portal System Administration	<ul style="list-style-type: none"> ▪ User Administration and Authentication ▪ Portal Authorization Concept ▪ Single Sign-On to Backend Systems ▪ Integrating SAP Applications ▪ Solution Management ▪ Secure System Management ▪ Design Modifications and Branding ▪ Advanced Portal Scenarios ▪ LAB
QUIZ # 5		
7	Configuration of Knowledge Management and Collaboration	<ul style="list-style-type: none"> ▪ Introduction to Knowledge Management ▪ CM Functions and Configuration ▪ KM Technical Infrastructure ▪ Introduction to Collaboration ▪ Virtual Rooms ▪ Real-Time Collaboration ▪ Groupware Integration ▪ TREX Administration ▪ LAB
QUIZ # 6		
8	Implementation	<ul style="list-style-type: none"> ▪ Installation ▪ Sizing ▪ Implementation and Methodology ▪ Clustering and High Availability ▪ LAB
QUIZ # 7		
9	Visual Composer	<ul style="list-style-type: none"> ▪ Installing and Configuring Visual Composer ▪ Understanding Using various components of visual composer ▪ Developing Simple Applications using Visual Composer ▪ LAB
10	WebDynpro	<ul style="list-style-type: none"> ▪ User Interfaces ▪ Controller Contexts ▪ Controller Architecture ▪ Components ▪ Generic UI-Services ▪ Dynamic Programming ▪ Models

We differentiate our training from others by delivering Role-Based SAP instruction rather than SAP product focused training.

SAP Netweaver 04s EP Technology Consultant Certification Preparation Training

		<ul style="list-style-type: none"> ▪ Internationalization ▪ Adobe Forms ▪ Web Dynpro Security ▪ Debugging ▪ Popup Windows ▪ LAB
QUIZ # 8		
11	Connector Framework	<ul style="list-style-type: none"> ▪ Overview, resource adapters, JCA and CCI ▪ SAP BAPI, transactions and Function Builder ▪ Jar Files for Connector Framework ▪ Deployment descriptor, Interaction Spec and closing connections ▪ JDBC ▪ LAB
QUIZ # 9		
12	Portal Components	<ul style="list-style-type: none"> ▪ Personalization ▪ Internationalization ▪ HTMLB ▪ JSP ▪ LAB
QUIZ # 10		
13	Portal Services and Web Services	<ul style="list-style-type: none"> ▪ Portal Services ▪ Web Services ▪ LAB
QUIZ # 11		
<p>Note:</p> <ol style="list-style-type: none"> 1. At the end of the course an Employment focused special training will be offered ONLY for qualified participants, and in this employment focused training we will be addressing SAP Security, SAP BI, SAP MDM and ABAP Workbench. 2. We take about a week to complete each session 		

We differentiate our training from others by delivering Role-Based SAP instruction rather than SAP product focused training.

APPENDIX – A – Certification Information

Certification Details

The certification exam consists of two components "Basis" and "Portal". You must pass both components to become certified.

Certification ID (Booking code)	: C_TEP10_04s
Certification duration	: 3 hour
Number of certification questions	: 120
Required certificates for participation in this certification test	: None

The certification test consists of questions from the areas specified below:

Topics "Basis" - You must pass this component to become certified

1. SAP Web AS Fundamentals (+)

- SAP Solution Offering
- Navigation
- SAP System Architecture
- Enterprise Services Architecture
- SAP NetWeaver, Overview

2. SAP Web AS ABAP Administration (+)

- Starting and Stopping SAP systems
- Configuring SAP Web AS ABAP
- User Management in SAP Web AS ABAP
- Configuring Remote Connections
- Patching SAP Web AS ABAP
- Scheduling Background Jobs
- Monitoring SAP Systems
- Technology Components for Browser-based User Interfaces

3. SAP Web AS Java Administration (++)

- Java Basics (non-programming topics)
- Starting and Stopping SAP Web AS Java
- Configuring SAP Web AS Java
- User Management in SAP Web AS Java
- Patching SAP Web AS Java
- Software Logistics for SAP Web AS Java
- Monitoring SAP Web AS Java

Topics "Portal" – You must pass this component to become certified

1. SAP NetWeaver Portal Fundamentals (+++)
 - The Big Picture
 - The End-User's Perspective
 - Technical Infrastructure
 - Portal Platform Content
 - Security Aspects
2. SAP NetWeaver Portal System Administration (+++)
 - User Administration and Authentication
 - Portal Authorization Concept
 - Single Sign-On to Backend Systems
 - Integrating SAP Applications
 - Solution Management
 - Secure System Management
 - Design Modifications and Branding
 - Advanced Portal Scenarios
3. Configuration of Knowledge Management and Collaboration (++)
 - Introduction to Knowledge Management
 - CM Functions and Configuration
 - KM Technical Infrastructure
 - Introduction to Collaboration
 - Virtual Rooms
 - Real-Time Collaboration
 - Groupware Integration

TREX Administration

4. Implementation (++)
 - Installation
 - Sizing
 - Implementation and Methodology
 - Clustering and High Availability

Amount of questions by topic (as percentage of test):

+ = 1 - 10%

++ = 11 - 20%

+++ = over 20%

Disclaimer:

CloneSkills is an independent training and SAP solutions company not affiliated to SAP AG or SAP America. At CloneSkills we exclusively promote the SAP NetWeaver Solutions and do not compete with SAP.

We differentiate our training from others by delivering Role-Based SAP instruction rather than SAP product focused training.
