

CLONESKILLS, INC.

Prepare To Lead.  
Lead With Skills.

---

Enterprise Data Warehousing Powered by **Informatica & Siebel Analytics**

---



Prepare to lead.  
Lead with skills.

CLONESKILLS

The Global Training Company for Cultivating IT Leadership

---

CLONESKILLS, Inc.

5348 Vegas Drive, Suite 733

Las Vegas, Nevada, 89108

Main : 1.800.836.5696

Email: [info@cloneskills.com](mailto:info@cloneskills.com)

W  
E  
  
B  
U  
I  
L  
D  
  
C  
A  
R  
E  
E  
R

---

1

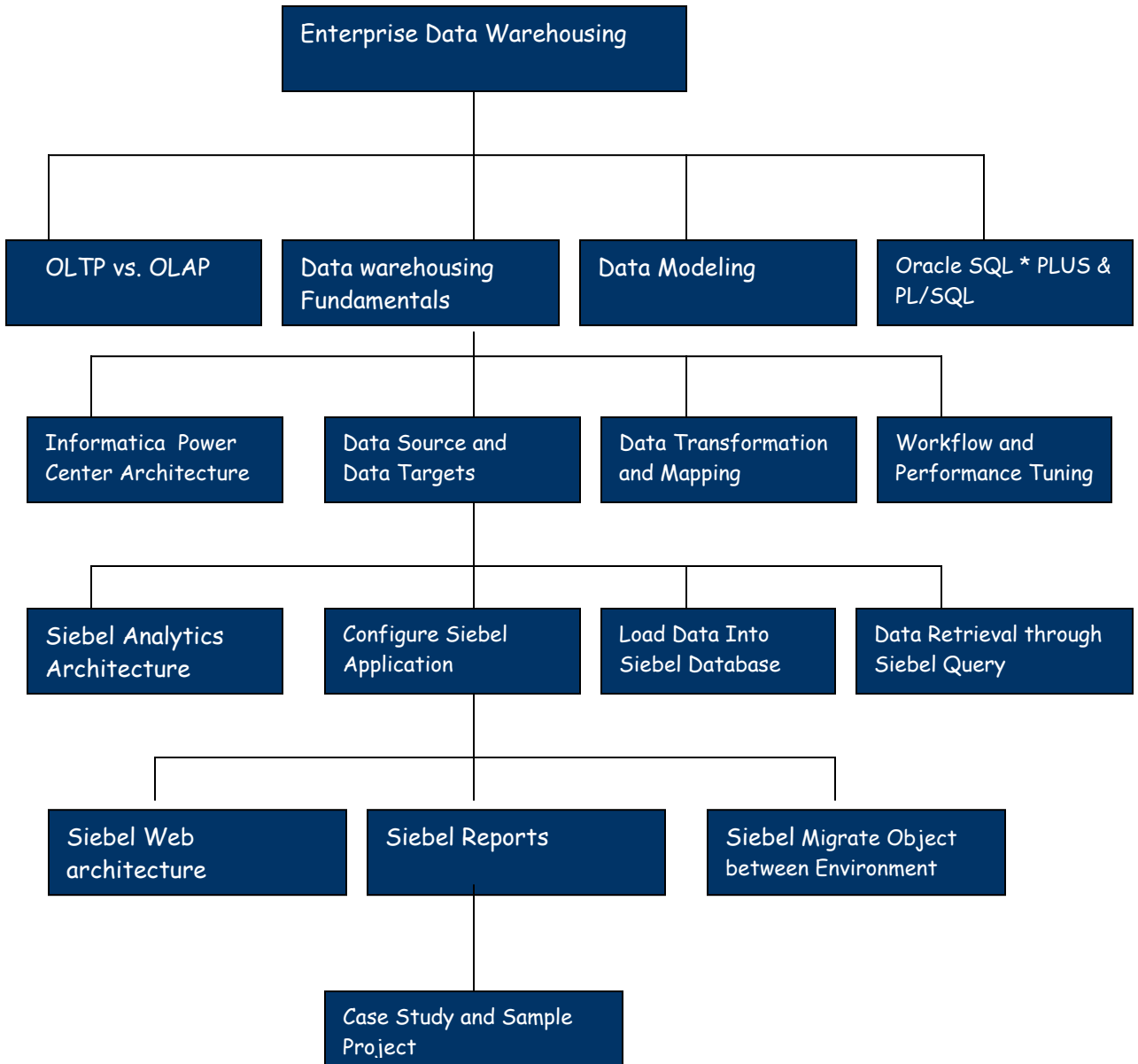
We differentiate our training from others by delivering Role-Based Siebel & Informatica instruction rather than Siebel & Informatica Product focused Training.

---

<http://www.CloneSkills.com> , [JothiP@CloneSkills.com](mailto:JothiP@CloneSkills.com) , (916)-296-0228

THE Global Training company for cultivating IT Leadership

## Training Roadmap



### Course Objectives:

- Understand the difference between OLTP vs. OLAP
- Understand RDBMS , Data warehousing Fundamentals , and Data warehousing Architecture
- Perform Conceptual , Logical and Physical Data Modeling
- Develop PL/SQL Programs and data conversion programs
- Understand the fundamentals of Informatica PowerCenter and its Architecture
- Acquire the solid foundation to make you successful Informatica PowerCenter consultant
- Learn Advanced Mapping Techniques , Performance tuning and partitioning feature
- Enable students to gain a foundational understanding of business intelligence concepts, Siebel Business Analytics architecture and user interfaces
- Enable students to gain a foundational understanding of the pre-built components of Siebel Business Analytics Applications
- Ability to navigate within Siebel applications
- Understanding of the underlying architecture of Siebel applications
- Domain experience in business intelligence, data warehouse design, and database design
- Describe the advantages of using a standardized implementation methodology
- Identify the recommended approach for implementing Siebel applications
- Identify how each client accesses Siebel Servers and data
- Install the Siebel Gateway Name Server, Enterprise Server, Siebel Server, and Database Server
- Test server-to-database connectivity
- Describe the layers in the Siebel security model
- Use Siebel Tools to examine parent and child object definitions
- List the critical elements of the Siebel configuration strategy
- Use configuration file parameters to enhance performance
- Create and test assignment rules
- Use Application Deployment Manager to migrate run-time configuration data from one environment to another
- Describe Siebel Remote components and their function
- Describe how Siebel Remote identifies and resolves database conflicts
- Describe how to set up Mobile Web Clients
- Explain how Siebel and Actuate applications interact to produce reports
- List common types of Siebel reports
- Explain the roles of slots, components, and libraries in Actuate report designs
- List the files involved in generating a report
- Identify the components that specify the Siebel data available in a report
- Group data in a list report based on a key field
- Include summary functions in a report
- Describe how to create master-detail reports with multiple hierarchies
- Explain how components are classes having properties and methods
- Override methods to customize component behavior
- Add parameters to Siebel reports
- Describe the reports-generation architecture, including the Siebel and Actuate components involved
- Manage report scheduling and notification

---

Enterprise Data Warehousing Powered by **Informatica & Siebel Analytics**

---

<b>Enterprise Data Warehousing Powered by Informatica &amp; Siebel Analytics</b>		
<b>Session #</b>	<b>Session Topics</b>	<b>Session Details</b>
<b>Data warehousing Fundamentals</b>		
<b>1</b>	<b>RDBMS Fundamentals</b>	<ul style="list-style-type: none"> <li>▪ RDBMS Fundamentals</li> </ul>
<b>2</b>	<b>OLTP vs. OLAP</b>	<ul style="list-style-type: none"> <li>▪ Difference between OLTP and OLAP application</li> <li>▪ Difference between an Enterprise Application and custom applications</li> <li>▪ LAB</li> </ul>
<b>3</b>	<b>Data Warehousing Fundamentals</b>	<ul style="list-style-type: none"> <li>▪ Cubes</li> <li>▪ ODS</li> <li>▪ Virtual InfoProvider</li> <li>▪ Dimensions</li> <li>▪ Facts</li> <li>▪ KPI (Key performance indicator)</li> <li>▪ Master Data</li> <li>▪ Transaction Data</li> <li>▪ Hierarchy</li> <li>▪ Text</li> <li>▪ Attributes</li> <li>▪ LAB</li> </ul>
<b>4</b>	<b>Data Warehousing Architecture</b>	<ul style="list-style-type: none"> <li>▪ Source Systems</li> <li>▪ ETL Services</li> <li>▪ Metadata Services</li> <li>▪ Access Services</li> <li>▪ Storage Services</li> <li>▪ Presentation Services</li> <li>▪ Archiving Services</li> <li>▪ Scheduling Services</li> <li>▪ LAB</li> </ul>
<b>5</b>	<b>Data Modeling</b>	<ul style="list-style-type: none"> <li>▪ ERD (Entity Relationship Model)</li> <li>▪ Subject Area Model</li> <li>▪ Dimension Model</li> <li>▪ Multi Dimension Model</li> <li>▪ Classis Star Schema</li> <li>▪ Extended Star Schema</li> <li>▪ Snowflake Schema</li> <li>▪ Modifying Existing Model</li> <li>▪ Performance Fine Tuning</li> <li>▪ LAB</li> </ul>

We differentiate our training from others by delivering Role-Based Siebel & Informatica instruction rather than Siebel & Informatica Product focused Training.

---

Enterprise Data Warehousing Powered by **Informatica & Siebel Analytics**

---

<b>Oracle PL/SQL Fundamentals</b>		
<b>6</b>	<b>SQL * PLUS</b>	<ul style="list-style-type: none"> <li>▪ DDL Statements</li> <li>▪ DML Statements</li> <li>▪ TCS Statements</li> <li>▪ Oracle Build in Functions</li> <li>▪ Oracle 10G New Features</li> <li>▪ Table Joins</li> <li>▪ Sub Queries</li> <li>▪ SQL Optimization</li> <li>▪ LAB</li> </ul>
<b>7</b>	<b>PL/SQL</b>	<ul style="list-style-type: none"> <li>▪ PL/SQL Structure</li> <li>▪ Declare , Open , Fetch , and Close Cursors</li> <li>▪ Dynamic SQLs</li> <li>▪ User Defined Types (Tables and Arrays )</li> <li>▪ Exception Handling</li> <li>▪ Packages</li> <li>▪ Functions</li> <li>▪ Procedures</li> <li>▪ Triggers</li> <li>▪ Views</li> <li>▪ Tables</li> <li>▪ Index</li> <li>▪ Sequences</li> <li>▪ Synonyms</li> </ul>
<b>Informatica</b>		
<b>8</b>	<b>Informatica PowerCenter Architecture</b>	<ul style="list-style-type: none"> <li>▪ Power Center Components</li> <li>▪ Designer</li> <li>▪ Repository Manager</li> <li>▪ Workflow Manager</li> <li>▪ Workflow Monitor</li> <li>▪ Informatica Concepts and Overview</li> <li>▪ Source Qualifier</li> <li>▪ Target Qualifier</li> <li>▪ Transformation</li> <li>▪ Mappings</li> <li>▪ Mapplets</li> </ul>
<b>9</b>	<b>Source</b>	<ul style="list-style-type: none"> <li>▪ Working with relational Sources</li> <li>▪ Working with Flat Files</li> </ul>
<b>10</b>	<b>Target</b>	<ul style="list-style-type: none"> <li>▪ Working with relational Targets</li> <li>▪ Working with Flat Files</li> </ul>
<b>11</b>	<b>Transformation</b>	<ul style="list-style-type: none"> <li>▪ Expression</li> <li>▪ Lookup</li> <li>▪ Sequence Generator</li> <li>▪ Filter</li> <li>▪ Joiner and Sorter</li> </ul>

We differentiate our training from others by delivering Role-Based Siebel & Informatica instruction rather than Siebel & Informatica Product focused Training.

---

Enterprise Data Warehousing Powered by **Informatica & Siebel Analytics**

---

		<ul style="list-style-type: none"> <li>▪ Procedural</li> <li>▪ Router</li> <li>▪ Aggregator</li> <li>▪ Active and Passive Transformations</li> <li>▪ Update Strategy</li> <li>▪ Data Concatenation</li> <li>▪ Debugging Mappings</li> </ul>
12	<b>Mappings &amp; Mapplets</b>	<ul style="list-style-type: none"> <li>▪ Mapping Variables &amp; Parameters</li> <li>▪ Creating Cubes &amp; Dimensions</li> <li>▪ Working with Mapping Wizards</li> </ul>
13	<b>Workflow Manger</b>	<ul style="list-style-type: none"> <li>▪ Server Architecture</li> <li>▪ Workflows, Worklets &amp; Sessions</li> <li>▪ Tasks, Assignments, Events, Command etc,</li> </ul>
14	<b>Performance Tuning</b>	<ul style="list-style-type: none"> <li>▪ Informatica Tuning</li> <li>▪ Oracle Tuning</li> </ul>
<b>Siebel Analytics</b>		
15	<b>Siebel Analytics Installation</b>	<ul style="list-style-type: none"> <li>▪ Siebel Analytics Installation</li> </ul>
16	<b>Siebel Analytics Architecture</b>	<ul style="list-style-type: none"> <li>▪ Siebel Analytics Web (SAW)</li> <li>▪ Siebel Analytics Server (SAS)</li> <li>▪ Pop Chart Server</li> <li>▪ Siebel Analytics Scheduler</li> <li>▪ Siebel Analytics Admin Tool</li> </ul>
17	<b>Information Flow between client and server</b>	<ul style="list-style-type: none"> <li>▪ Importing Physical Tables</li> <li>▪ Creation of Physical Joins</li> <li>▪ Configuring Connection Pools</li> </ul>
18	<b>Physical and Logical Layer</b>	<ul style="list-style-type: none"> <li>▪ Creation of Business Model</li> <li>▪ Creation of Logical Facts</li> <li>▪ Creation of Dimensions</li> <li>▪ Creation of Dimension Hierarchies/Levels</li> <li>▪ Creation of Measures</li> <li>▪ Aggregation Navigation</li> </ul>
19	<b>Presentation Layer</b>	<ul style="list-style-type: none"> <li>▪ Presentation Layer</li> <li>▪ Creation of Presentation Catalog</li> <li>▪ Creation of Presentation tables</li> <li>▪ Creation of Presentation Columns</li> </ul>
20	<b>Siebel Analytics Admin Tool</b>	<ul style="list-style-type: none"> <li>▪ Groups</li> <li>▪ Users</li> <li>▪ Repository Variables</li> <li>▪ Session Variables</li> <li>▪ Initialization Blocks</li> </ul>
21	<b>Siebel Analytics Components in User Interface (UI) Layer</b>	<ul style="list-style-type: none"> <li>▪ Folders</li> <li>▪ Dashboards</li> <li>▪ Pages</li> <li>▪ Columns</li> <li>▪ Sections</li> <li>▪ Reports</li> <li>▪ Filters</li> <li>▪ Global Filters</li> <li>▪ GoNav , and Different types of Views</li> </ul>

We differentiate our training from others by delivering **Role-Based Siebel & Informatica** instruction rather than Siebel & Informatica Product focused Training.

---

Enterprise Data Warehousing Powered by **Informatica & Siebel Analytics**

---

22	Siebel Analytics Cache Management	<ul style="list-style-type: none"><li>▪ Enabling Cache</li><li>▪ Automated Cache Purging using Event Polling</li></ul>
23	Siebel Analytics Repository Development	<ul style="list-style-type: none"><li>▪ Siebel Analytics Repository Development</li></ul>
24	Development using Siebel Answers	<ul style="list-style-type: none"><li>▪ Development using Siebel Answers</li></ul>
25	Siebel Analytics Time Series Wizard	<ul style="list-style-type: none"><li>▪ Siebel Analytics Time Series Wizard</li></ul>
26	Security Implementation	<ul style="list-style-type: none"><li>▪ Object Alias<ul style="list-style-type: none"><li>○ Year Ago, Quarter Ago, Month Ago</li></ul></li><li>▪ <b>Authentication</b><ul style="list-style-type: none"><li>○ LDAP</li><li>○ Database</li><li>○ Repository</li><li>○ External Table</li></ul></li><li>▪ <b>Authorization</b><ul style="list-style-type: none"><li>○ Filters, Data Security – GROUP</li><li>○ UI Security – WEBGROUPS</li></ul></li></ul>

**Note:** The delivery of this curriculum is based on a real-time [end-to-end Data Warehousing Case Study](#), and this case study based delivery model will increase participant's confidence level to handle any complex project situations in their job functions.

---

**Disclaimer:**

CloneSkills is an independent training and Siebel/Informatica solutions company, not affiliated to Siebel or Informatica. At CloneSkills we exclusively promote Siebel/Informatica Solutions and do not compete with Oracle or Informatica.

We differentiate our training from others by delivering Role-Based Siebel & Informatica instruction rather than Siebel & Informatica Product focused Training.